



FOR COMMERCIAL SETTINGS

# SWTCH Level 2 Charging Solutions

CHARGE EVERYWHERE



# LITE-ON Platinum

## 19.2 kW Level 2 Charger



The LITE-ON Platinum is designed to be the ideal electric vehicle charging solution for commercial and multi-unit residential spaces.

- + Enhanced owner & user experience
- + Slim, compact and stylish design
- + Reduced install cost
- + Low maintenance
- + Access control
- + Revenue generation
- + Remote management
- + Local load management
- + OCPP compliant

### ABOUT LITE-ON PLATINUM

The LITE-ON Platinum is a reliable level 2 electric vehicle charger with an attractive design that is easy to own and operate. Its slim and durable design is outdoor rated with hard-wired installation, and its adjustable power output can match your supply panel, electric vehicle, and driving range.

# LITE-ON Platinum

## 19.2 kW Level 2 Charger

### SPECIFICATIONS

CONNECTORS	Universal SAE J1772
POWER	Adjustable up to 19.2 kW
SUPPLY INPUT	208/240VAC, split phase
CURRENT	80 A
SUPPLY FREQUENCY	50 Hz / 60 Hz
LOAD MANAGEMENT	Yes
CABLE LENGTH	25 ft.
METERING ACCURACY	Embedded $\pm 1\%$
REAL-TIME CLOCK	Yes (7 days)
WI-FI	802.11 b/g/n
CELLULAR	LTE Cat. M1/ Cat.NB IoT
DIMENSIONS	14.1(H) x 10.6(W) x 5.5(D) inches
RFID	ISO 14443 A/B, ISO 15693, NFC, NEMA interoperability protocol
DISPLAY	116(L) x 8.5(W) x 37(H)mm, 5.57mm Character Height, 5x8 Dot Matrix, OLED 20x2
DATA PROTOCOL	OCPP 1.6J
IP RATING	NEMA 3R
IMPACT RESISTANCE	IK10
OPERATING TEMPERATURE	-35°C/-31°F to 55°C/131°F
STORAGE TEMPERATURE	-40°C/-40°F to 80°C/176°F
WARRANTY	3-year included, 5-year optional
CERTIFICATION	UL 50/ 991/ 1449/ 1998/ 2231/ 2594 FCC Part 15B
WIRING TYPE	Hardwired



# SWTCH Network Management

## For a Connected Charging Experience

### Easy access for drivers.

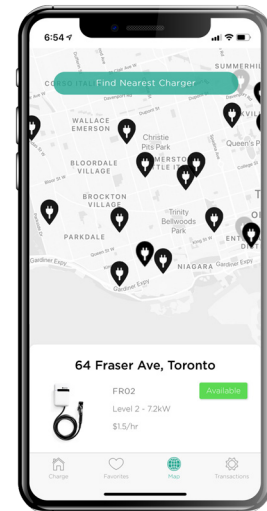
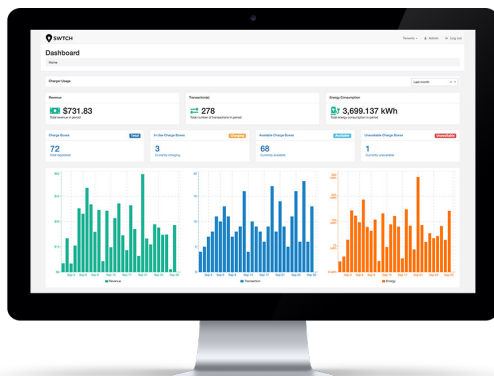
We offer drivers multiple options for access and payment, including credit card tap, plug-in charge, and web browser and mobile app activation. Using our web or mobile app interface, drivers can:

- Locate chargers
- Add payment method
- Track energy use
- Add favorites
- View real-time status
- Activate chargers
- View charging history
- Leave feedback

### Simple management for charger owners.

Our admin dashboard tells you everything you need to know about your chargers, in real-time. With SWTCH's network management services, charger owners get:

- Access control
- Flexible configuration (e.g., first come, first-served or reservation-based)
- Real-time monitoring
- Remote control, including start/stop charge session
- Automatic billing
- Data & analytics: individual & aggregate energy and revenue values
- Optional loitering penalties and automatic license plate recognition (ALPR)



Charger listing page in map view on SWTCH mobile app

### BENEFITS

- Built on the global open communication standard for EV charging, OCPP, to prevent vendor lock-in
- Automated energy management to reduce energy costs and minimize infrastructure upgrades
- Multiple payment methods to streamline driver access
- 24/7 customer and technical support
- Seamless integration with smart building and e-mobility services
- Fast turn-around and quality guaranteed by our team of in-house systems engineers

